

AppStream trial configuration

1) After deploy AppStream.war click on AppStream link

The screenshot shows the Tomcat Web Application Manager interface. The browser window title is '/manager - Microsoft Internet Explorer'. The address bar shows 'http://127.0.0.1:8080/manager/html'. The page features the Apache Software Foundation logo and the title 'Tomcat Web Application Manager'. A message box displays 'OK'. Below the navigation bar, there is a table of applications. The 'AppStream' application is highlighted in green.

Path	Version	Display Name	Running	Sessions	Commands
/	None specified	Welcome to Tomcat	true	0	Start Stop Reload Undeploy Expire sessions with idle ≥ 30 minutes
/AppStream	None specified		true	1	Start Stop Reload Undeploy Expire sessions with idle ≥ 1,000 minutes
/docs	None specified	Tomcat Documentation	true	0	Start Stop Reload Undeploy Expire sessions with idle ≥ 30 minutes
/manager	None specified	Tomcat Manager Application	true	1	Start Stop Reload Undeploy Expire sessions with idle ≥ 30 minutes

2) On first page check created directories

The screenshot shows the AppStream configuration screen. The browser window title is 'http://127.0.0.1:8080/AppStream/login.do?null - Microsoft Internet Explorer'. The address bar shows 'http://127.0.0.1:8080/AppStream/login.do?null'. The page contains a 'Licence file loader' section with 'Browse...' and 'License Upload' buttons. Below is a 'Database connection Configuration screen' with fields for Server, Port, Service, DB User, DB User Password, and APPL_ADMIN User Password. The 'APPL_ADMIN User Password' field is filled with 'Welcome01'. At the bottom, a blue box displays a list of successfully created directories.

Licence file loader

Database connection Configuration screen

Please fill up TNS names for successful connection to DB

Server	server01.atteya.net	
Port	1521	
Service	TEST	

DB User/Schema configuration

DB User	APPS_RO	
DB User Password	APPS_PASSWD	

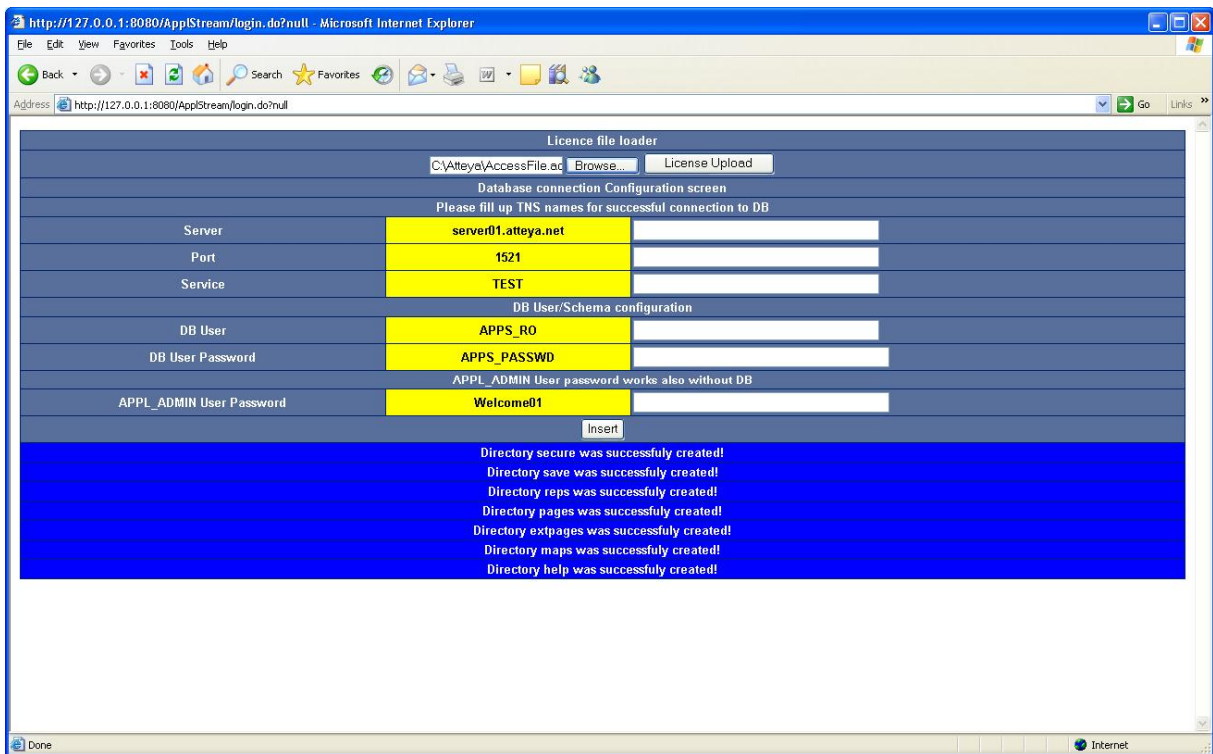
APPL_ADMIN User password works also without DB

APPL_ADMIN User Password	Welcome01	
--------------------------	-----------	--

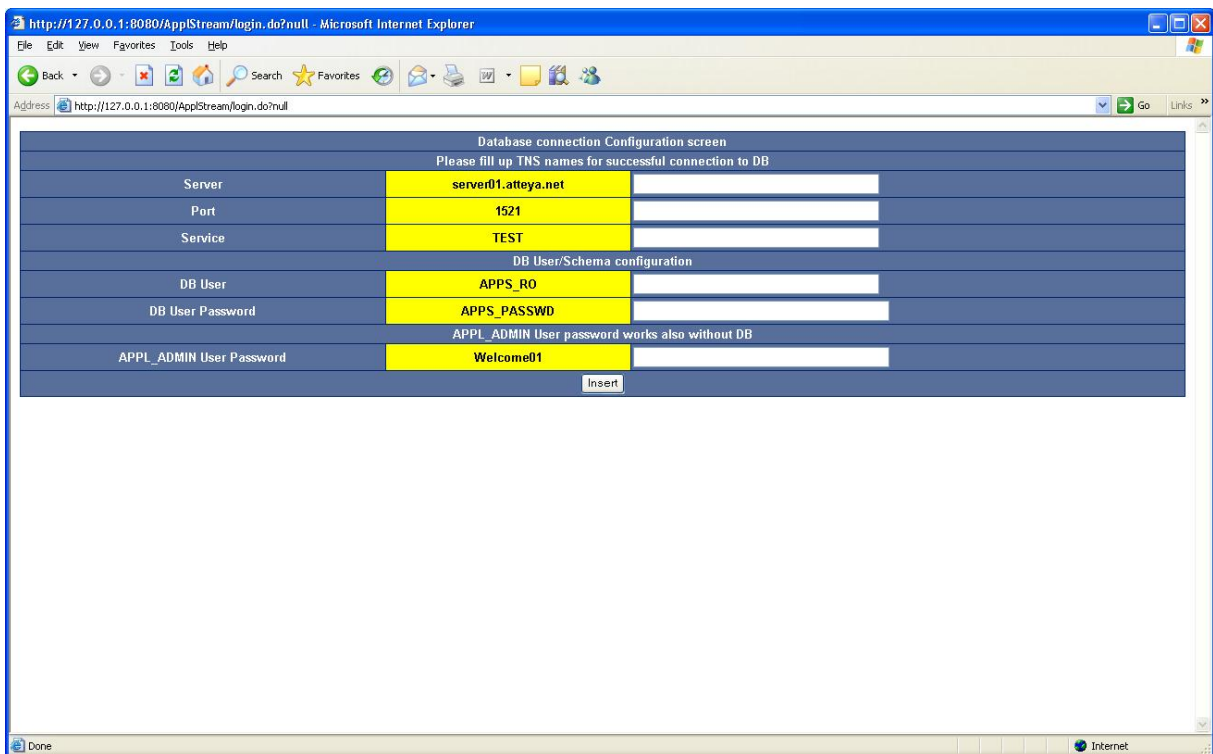
Insert

Directory secure was successfully created!
Directory save was successfully created!
Directory reps was successfully created!
Directory pages was successfully created!
Directory extpages was successfully created!
Directory maps was successfully created!
Directory help was successfully created!

3) Insert licence file



4) Licence file loader will disappear



5) Fill up database server TNS names, schema you will use and APPL_ADMIN password

Database connection Configuration screen		
Please fill up TNS names for successful connection to DB		
Server	server01.atteya.net	atteya10
Port	1521	1522
Service	TEST	ATTEYADB
DB User/Schema configuration		
DB User	APPS_RO	APPS
DB User Password	APPS_PASSWD
APPL_ADMIN User password works also without DB		
APPL_ADMIN User Password	Welcome01

Insert

6) You can login like APPL_ADMIN when database connection is correct

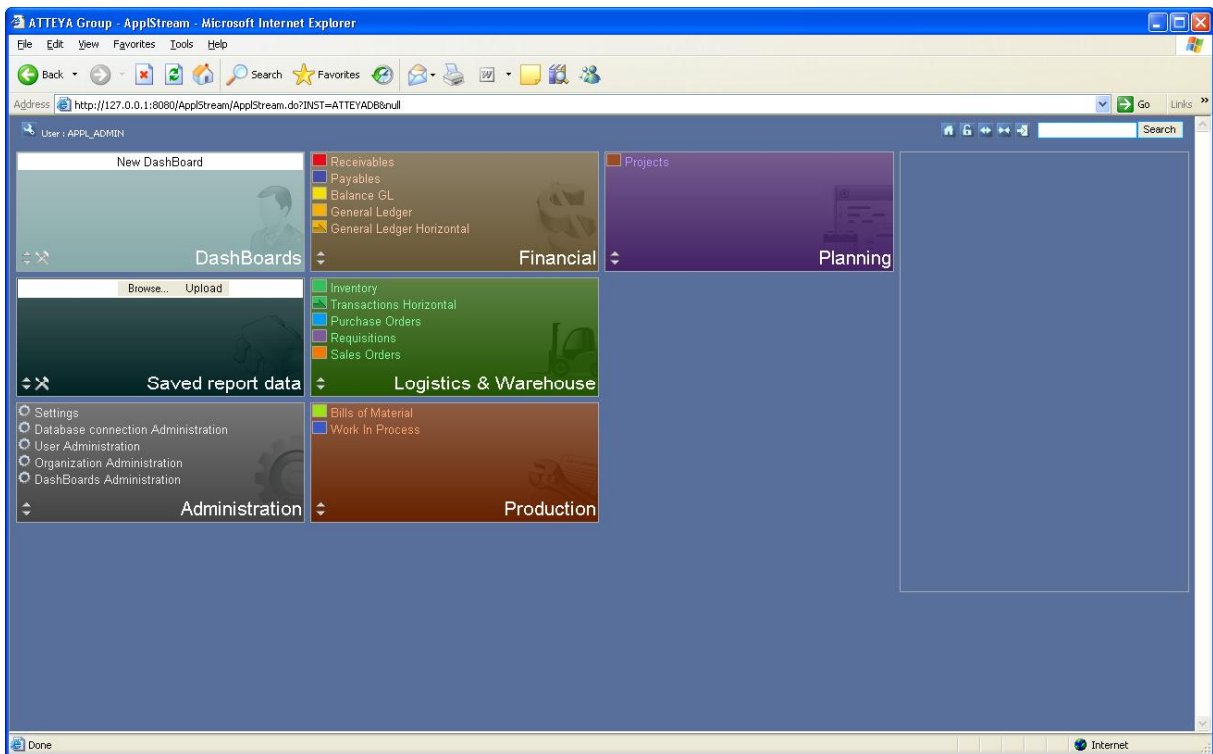
Instance for login is:

User name:

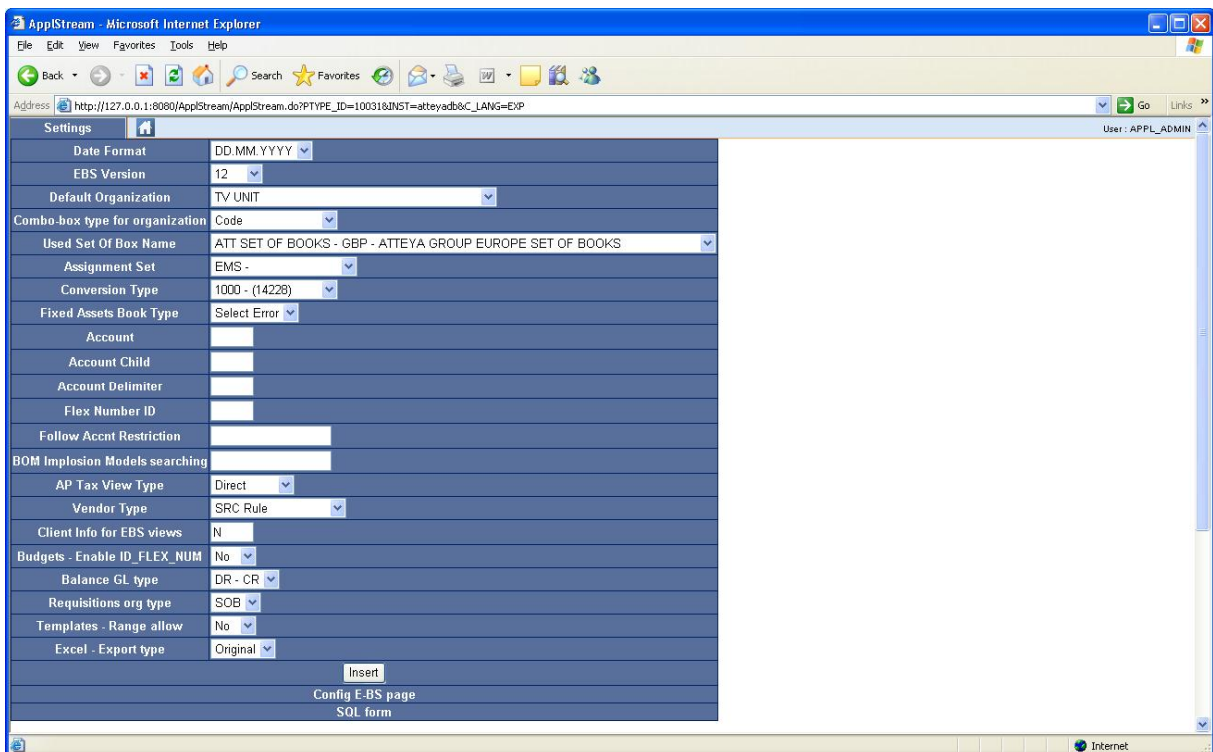
Password:

© 2015 ATTEYA Group

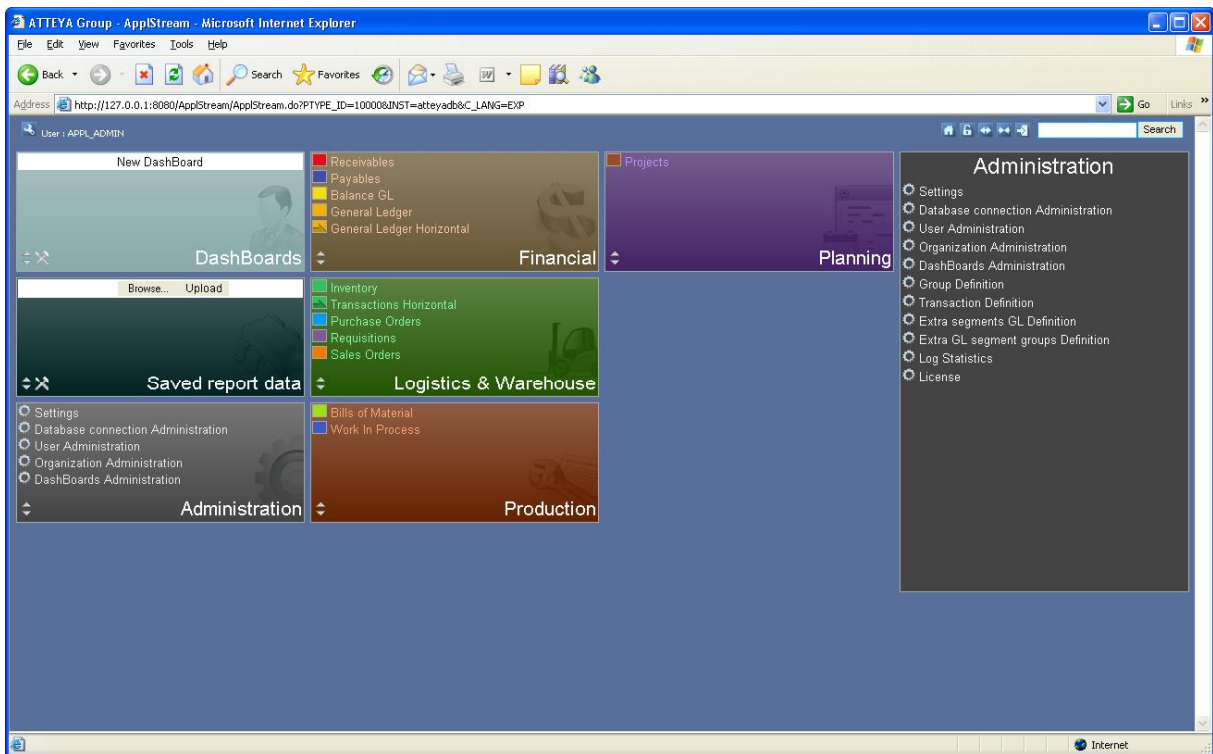
7) Click Settings on menu page



8) Try to configure and click Insert button – then menu ikon (top-left-house)



9) Choose module and click



10) Try first report

